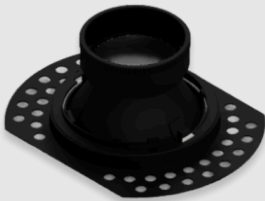


PD-MINIF-B

Key Features

- Mounting Type: Plaster-In
- Ingress Protection (IP): 20
- Warranty: 2 Year(s)
- Product Dimensions (mm): L88xW68xH39
- Twist & Lock Design
- Cut Out Diameter: 58mm
- Anti-glare Design

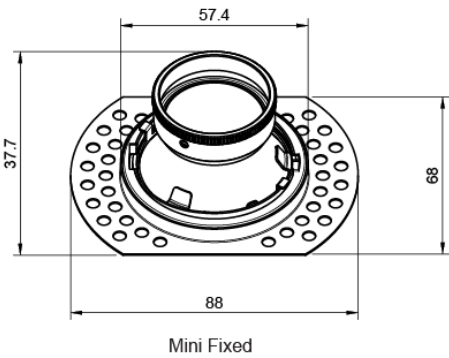


IP65

Mechanical Data

Body Colour	Black
Product Dimensions	88x68x39 mm

Dimensions



Environment

Body Material	Metal
Ingress Protection (IP)	IP65
Mounting Type	Plaster In